



STRATO
GLOBAL SOURCING & PARTNERSHIPS

MINERAL CORE WALL PANEL

Click Together, Refresh in an Instant

THE 2026 COLLECTION

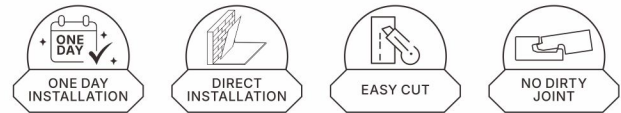
Etches the artistic language of natural textures

REFRESH IN A INSTANT

1-Day Wall-Quick-Install Panels

01 Effortless & Fast Installation

Revolutionary design enables direct overlay, seamless joints, and same-day completion with minimal labor.



02 Ultimate Protection & Safety

Safeguards spaces with fire resistance, waterproofing, antimicrobial properties, and thermal efficiency.



03 Unmatched Durability & Performance

Endures heavy use, resists scratches, impacts, and stains while retaining its flawless look.



STRATO MINERAL CORE Wall Panel is perfect for your renovation project.

MINERAL CORE Wall Panel is an innovative building material engineered with a core composed of natural stone powder and PVC composite, finished with a highly durable wear layer applied through an advanced extrusion technique.

This product integrates the key benefits of ceramic tiles, conventional wall claddings, and flooring systems, delivering authentic texture and superior durability.

It enables rapid installation and cost efficiency, making it well-suited for the DIY market. Furthermore, it complies with stringent environmental protection

standards, reflecting a new benchmark in sustainable construction materials.

✓ SGS testing result: zero formaldehyde, benzene and phenol

✓ SGS testing result: zero mercury, cadmium and other 36 harmful heavy metals.

✓ Replaced the traditional paint process and melamine impregnated paper process, and greatly reduces the VOC.

UV Coating

Wear resistance layer

Decorative layer

Rigid core base layer

Waterproof Layer



THE ART OF SPACE: DEFINED BY MINERAL CORE WALL PANEL

MINERAL CORE Wall Panels are a premium solution for modern interiors, combining rapid installation, complete waterproofing, and reliable mold resistance.

Their innovative click-lock or tongue-and-groove systems enable extremely fast and straightforward installation, significantly reducing project timelines and supporting both DIY and professional applications over existing surfaces.

With a 100% waterproof core, the panels provide outstanding protection against moisture and water damage, ensuring long-term performance even in high-humidity environments. Thanks to their waterproof properties and inorganic composition, they effectively inhibit mold and mildew growth, promoting a healthier indoor environment while reducing maintenance needs.

These panels replicate the high-end appearance of natural materials, successfully integrating aesthetic appeal with sturdy functionality. They are particularly well-suited for:

· **High-Moisture & Wet Areas:** Being fully waterproof, they are ideal for spaces exposed to humidity, splashes, or direct water contact, such as bathrooms and shower surrounds, where they resist moisture, prevent mold, and avoid warping or delamination.

· **High-Traffic & Heavy-Use Areas:** The robust mineral core offers exceptional impact, scratch, and wear resistance, making these panels a durable, low-maintenance solution for commercial settings like retail stores, restaurants, hotels, offices, and healthcare facilities.

· **Specialized & Practical Applications:** Their combination of easy installation and high performance makes them ideal for unique uses such as rental properties and apartments, offering landlords a durable, tenant-friendly surface that is easy to replace or update between occupants.





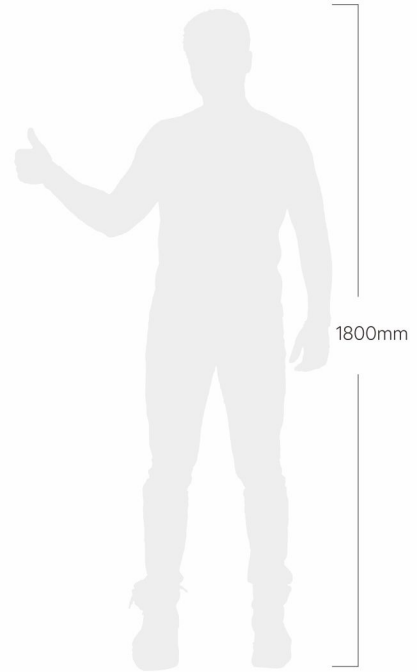
TOTAL FLEXIBILITY.



mm



mm



from 900mm to 2600mm

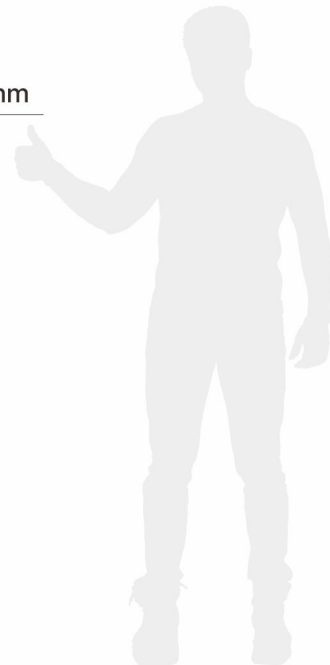
from 1200mm to 2600mm



475x900mm



600x1200mm



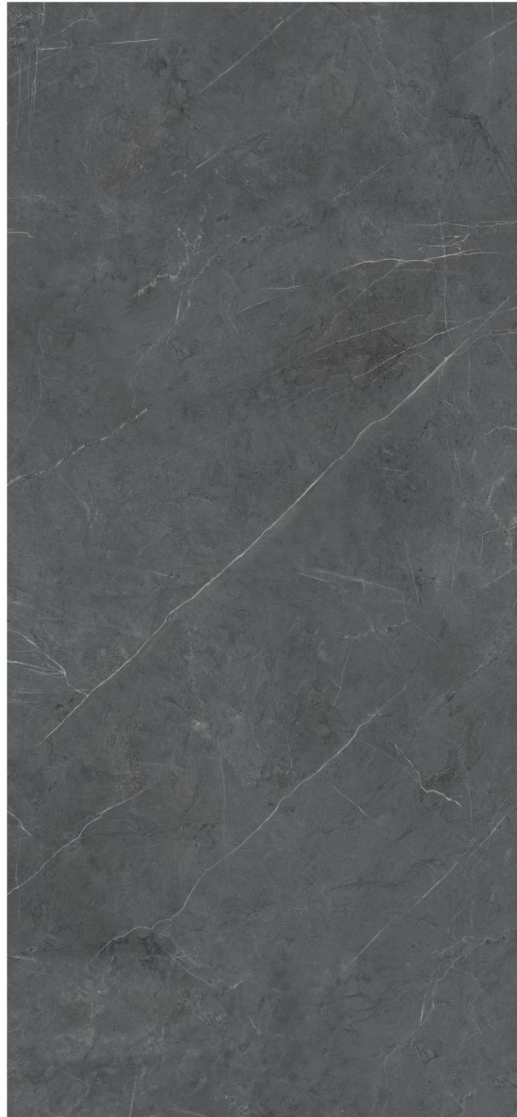


CUSTOM SIZES. CUSTOM LOCKING. TOTAL FLEXIBILITY.

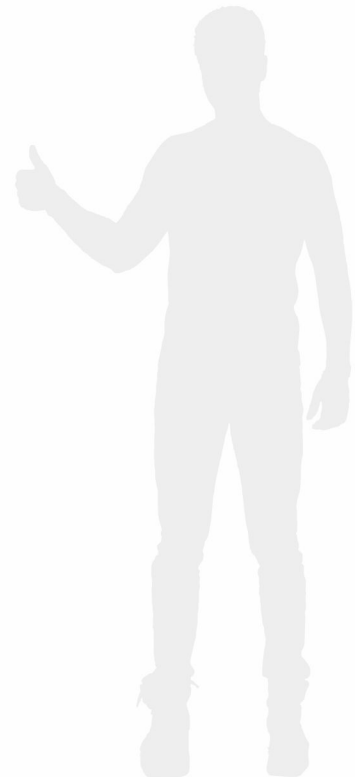
A length ranging
from 2400mm to 2600mm



600x2600mm



1200x2600mm





NATURE'S TEXTURE, REIMAGINED

STONE SERIES

WITH BOLD, STRIKING VEINS AND SOFT,
CLOUD-LIKE FORMATIONS, THEY CREATE A POWERFUL
VISUAL STATEMENT AND A UNIQUE FOCAL POINT.

CUSTOM SIZES. CUSTOM LOCKING.
TOTAL FLEXIBILITY.



Stone

Nature's Texture, Reimagined



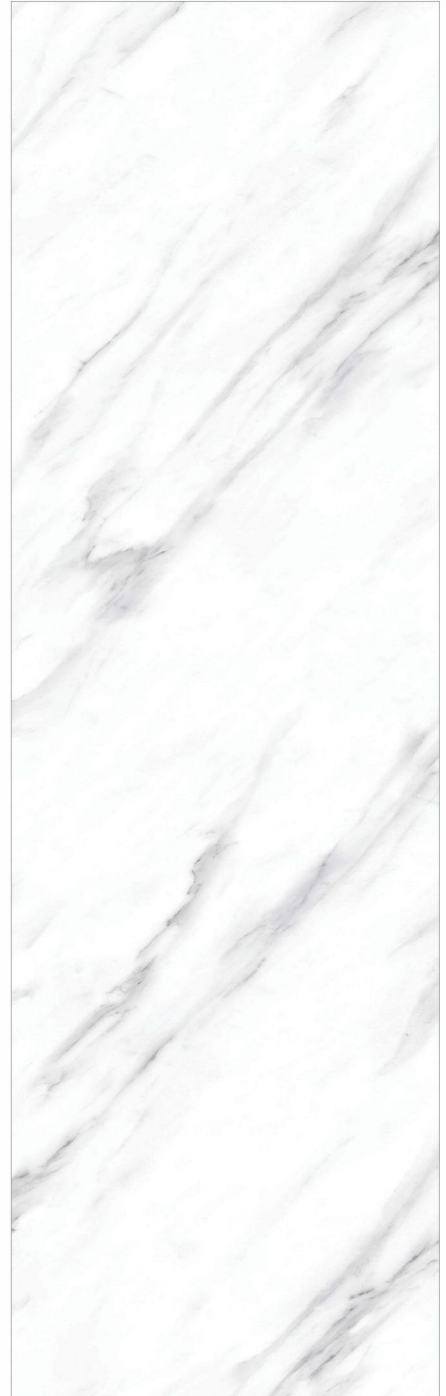
Marble

TSM 2401



Stone

Nature's Texture, Reimagined



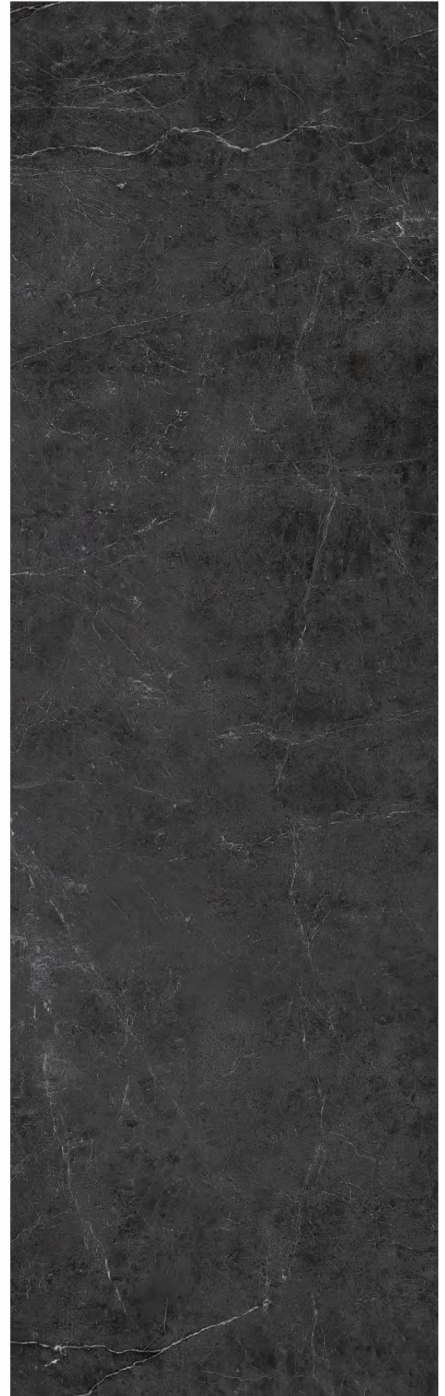
Jazz White

TSM 2418



Stone

Nature's Texture, Reimagined



Marble

TSM 2406



Stone

Nature's Texture, Reimagined



Rust

TSM 2509



Stone

Nature's Texture, Reimagined



Marble

TSM 2413



Marble

TSM 2414



Stone

Nature's Texture, Reimagined



Marble

TSM 2417



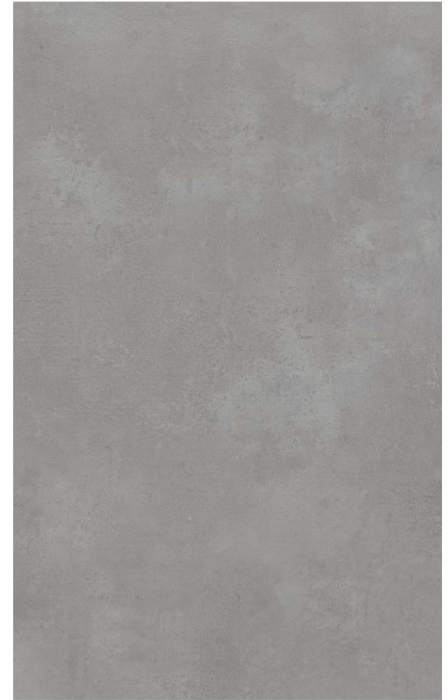
Marble

TSM 2416



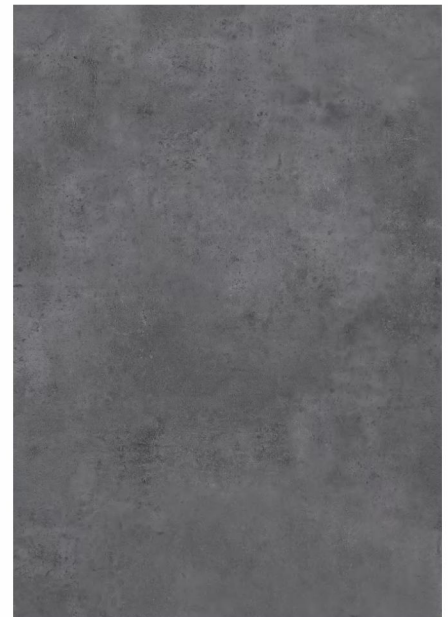
Stone

Nature's Texture, Reimagined



Cement

TSM 2431



Cement

TSM 2430



Stone

Nature's Texture, Reimagined



Marble

TSM 2403



Marble

TSM 2402



Marble

TSM 2404



Stone

Nature's Texture, Reimagined



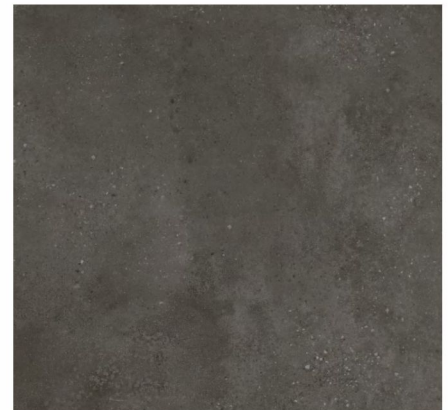
Terrazzo

TRS 24822



Terrazzo

TRS 24823



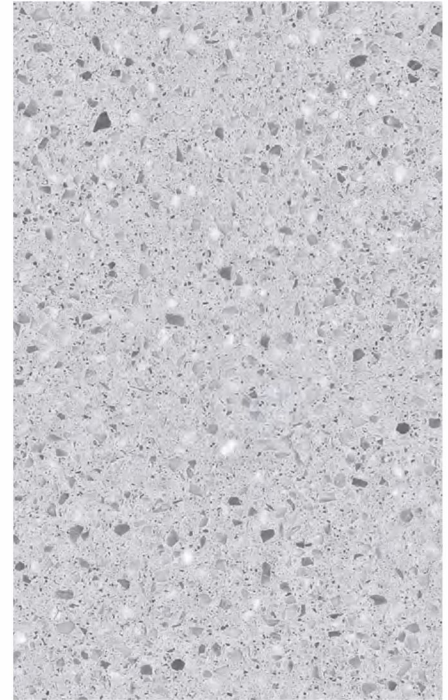
Terrazzo

TRS 24824



Stone

Nature's Texture, Reimagined



Terrazzo

TRS 24825



Terrazzo

TRS 24826



Stone

Nature's Texture, Reimagined



Terrazzo

TRS 24827



Terrazzo

TRS 24828



UNIQUE WARMTH AND TEXTURE

WOOD SERIES

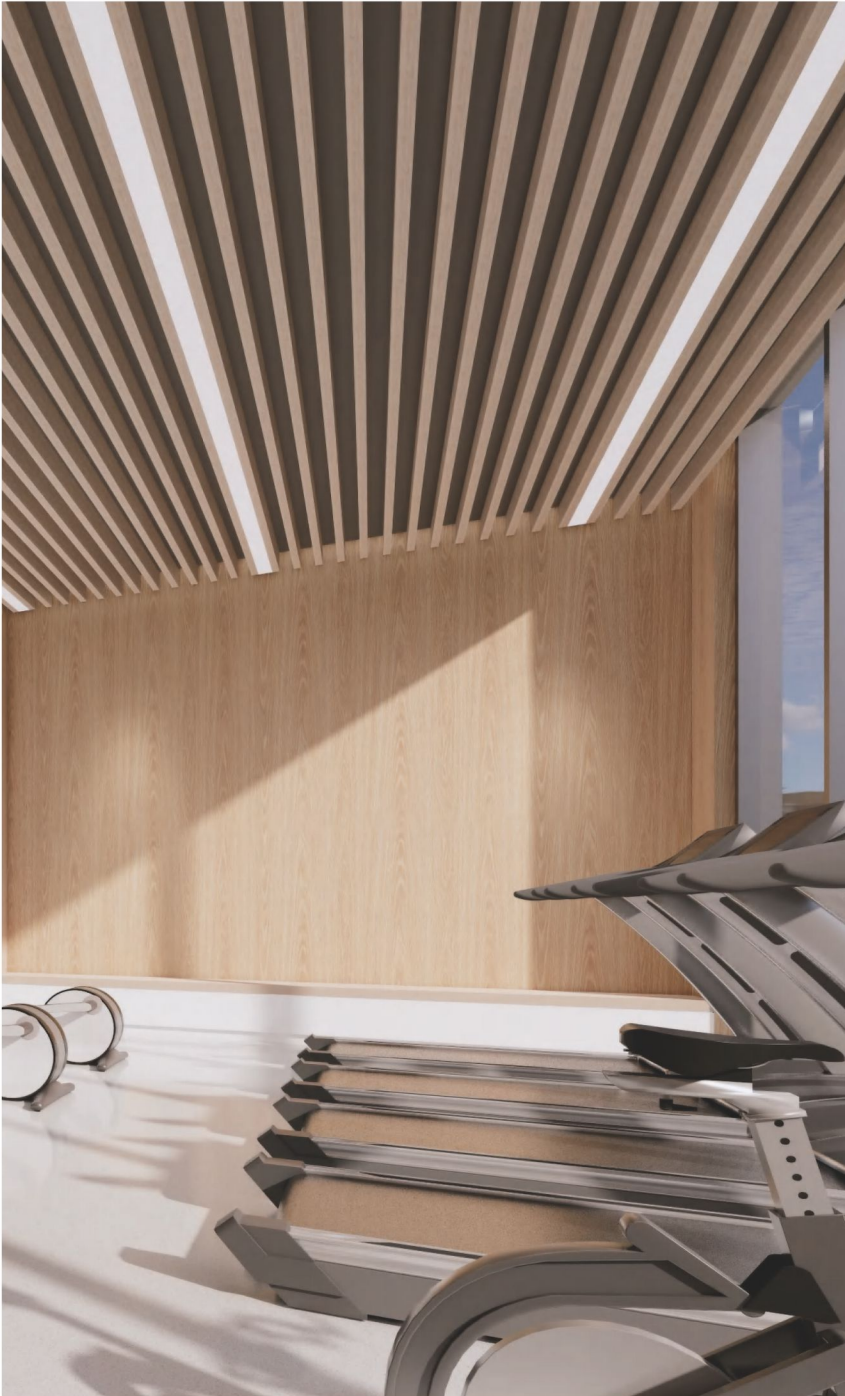
BRING TIMELESS WOOD ELEGANCE INTO ANY SPACE.
EACH PANEL FEATURES UNIQUE GRAINS AND KNOTS,
CREATING A COZY ATMOSPHERE WITH MODERN DURABILITY.

CUSTOM SIZES. CUSTOM LOCKING.
TOTAL FLEXIBILITY.



Wood

Unique warmth and texture



Firenze oak

TWS 2489



Firenze oak

TWS 2490



Wood

Unique warmth and texture



Cherry wood

TWS 2494



Cherry wood

TWS 2496



ARTISTRY IN DEPTH.BEYOND THE SURFACE.

BERNINI SERIES

TRANSFORMS WALLS WITH A RHYTHM OF CARVED CUBES,
CREATING A MESMERIZING INTERPLAY OF LIGHT
AND SHADOW THAT EVOKES A SENSE OF MODERN ART
AND ARCHITECTURAL MASTERY.TS.

CUSTOM SIZES. CUSTOM LOCKING.
TOTAL FLEXIBILITY.



REIMAGINE WALLS WITH CNC-CARVED TILE EFFECTS

Authentic Tile Aesthetics: Embossed lines and texture for a realistic look and feel.

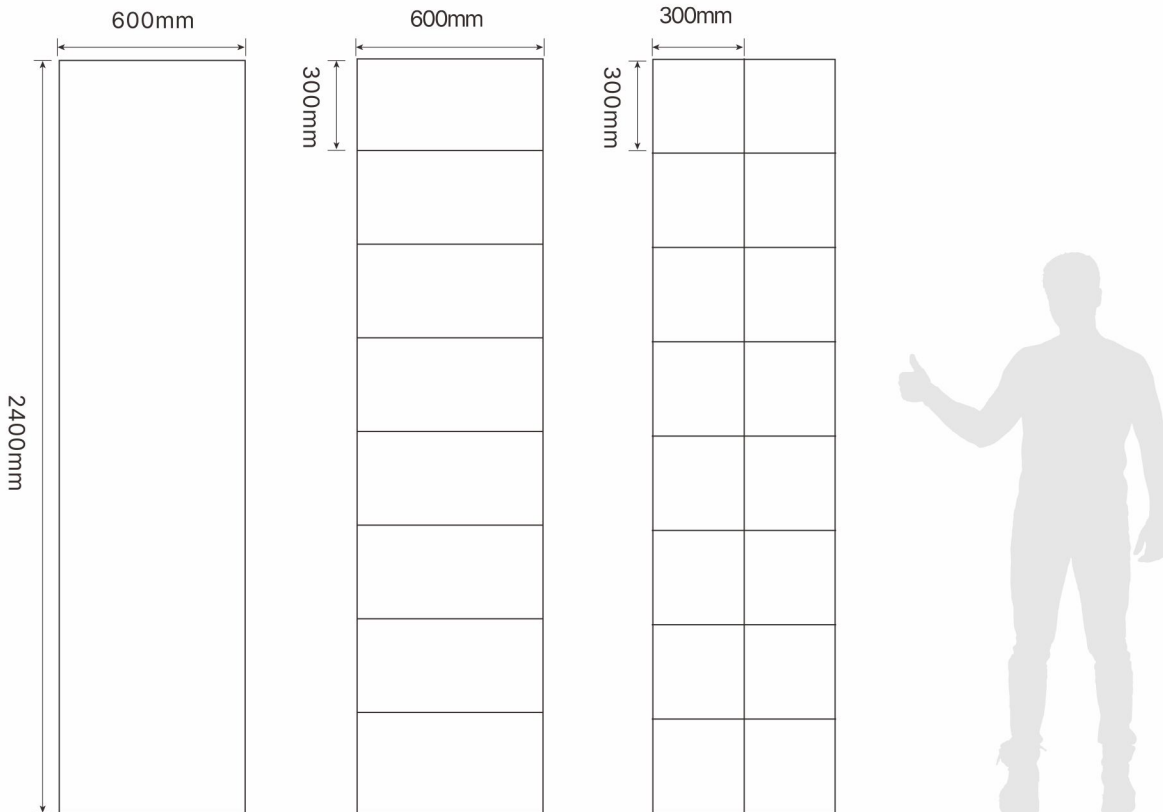
Endless Patterns: From vintage mosaics to modern geometric designs—all achievable through CNC precision.

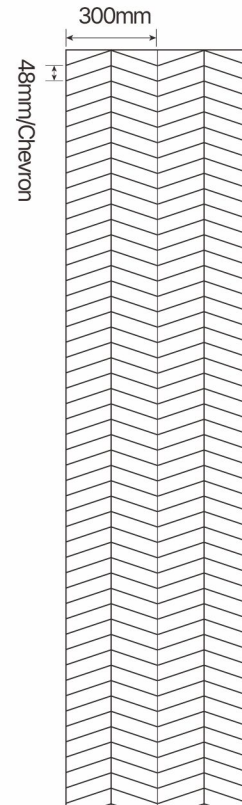
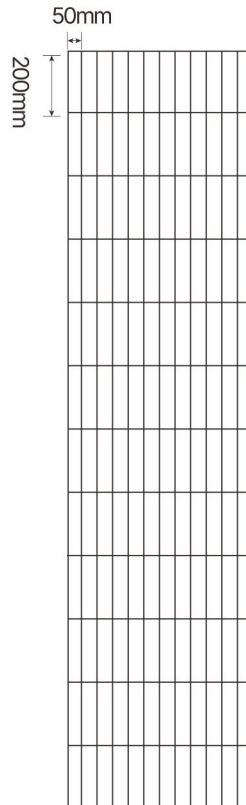
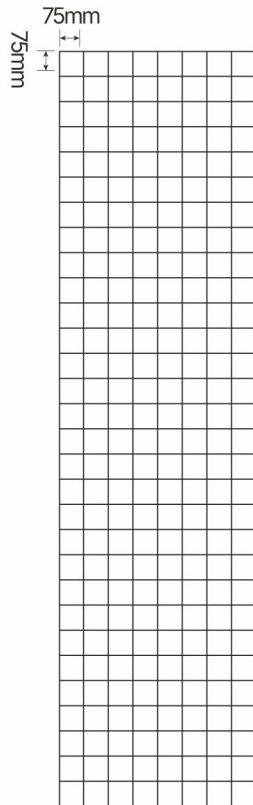
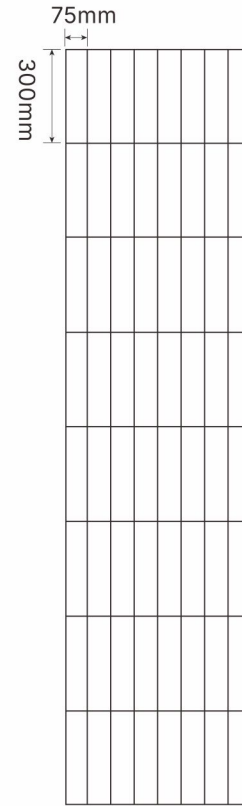
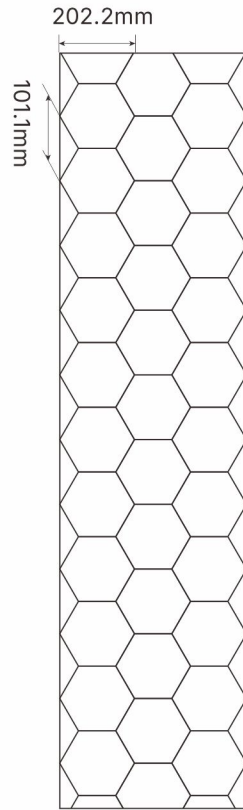
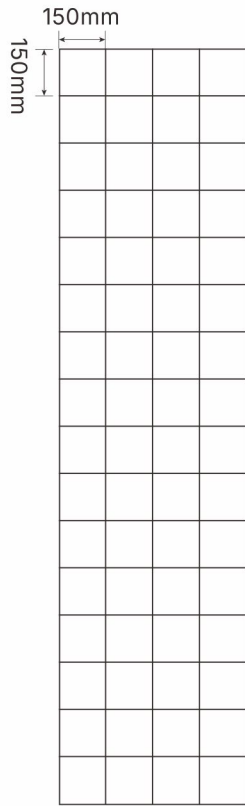
Experience a revolution in interior design with our innovative CNC-carved MINERAL CORE wall panels.

Using precision laser engraving technology, we

sculpt intricate, realistic tile-laying patterns directly onto the surface—recreating the elegant look of ceramic tiles without the hassle, weight, or cost.

Whether you desire the classic charm of subway tiles, the luxury of herringbone, or the grandeur of large-format layouts, our technology brings every style to life with flawless detail.

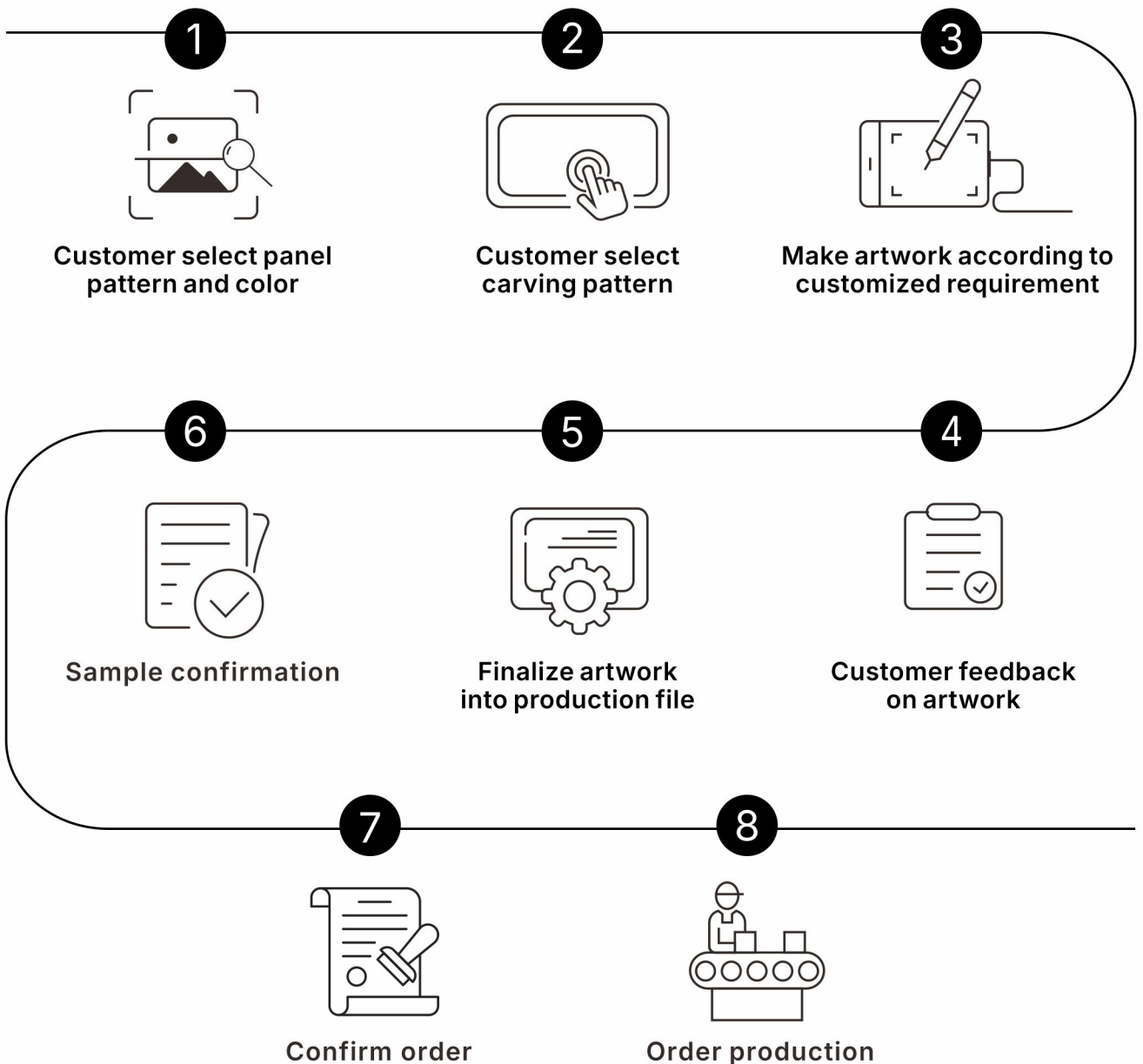






BERNINI SERIES CUSTOMIZE PROCESS

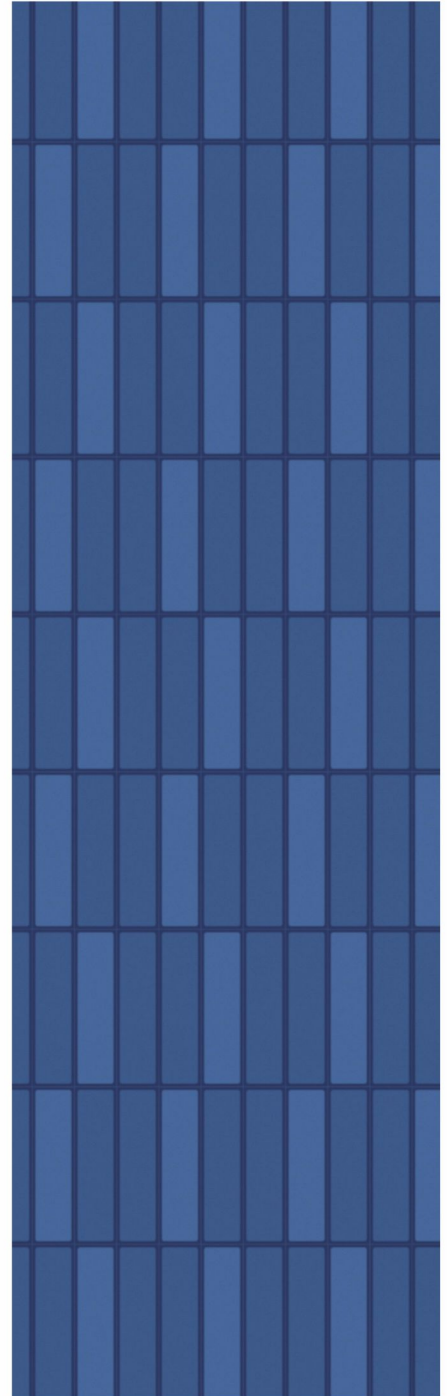
Reimagine Walls with CNC-Carved Tile Effects





Bernini

Artistry in Depth. Beyond the Surface



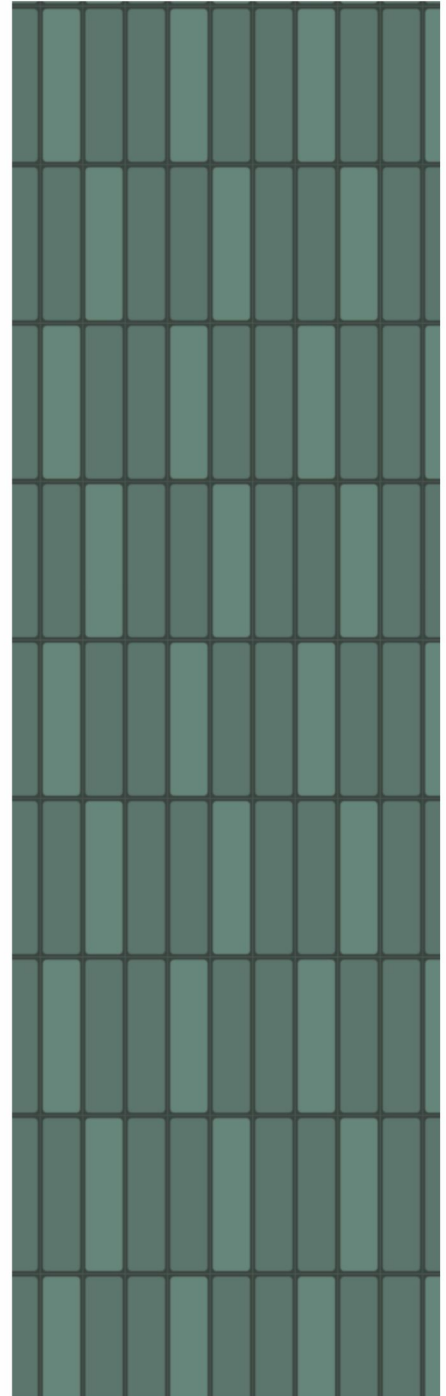
Blue gradient grid

TB 24251



Bernini

Artistry in Depth. Beyond the Surface



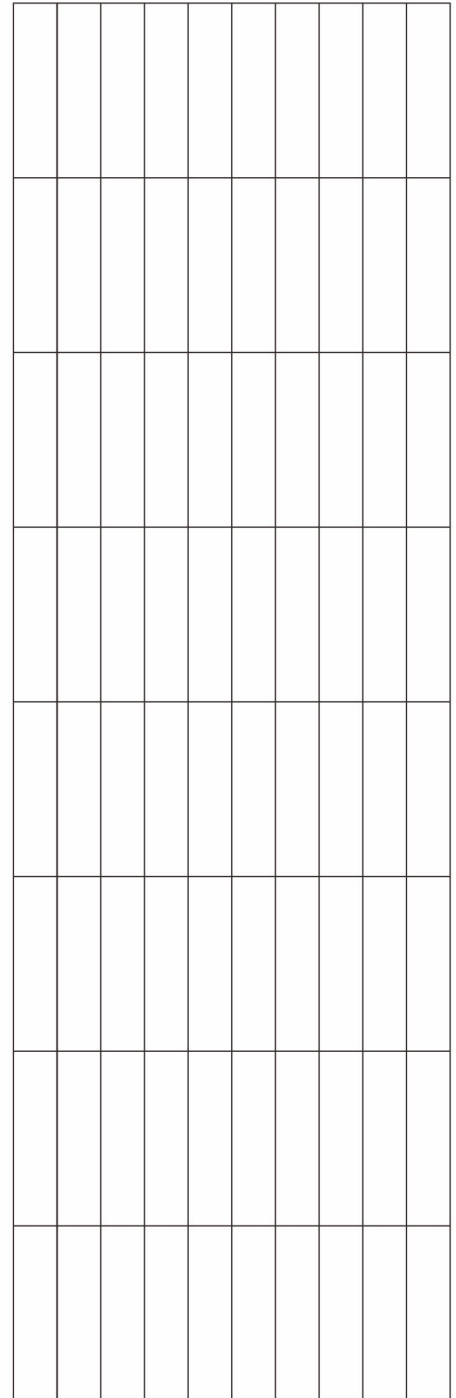
Blue gradient grid

TB 24252



Bernini

Artistry in Depth. Beyond the Surface



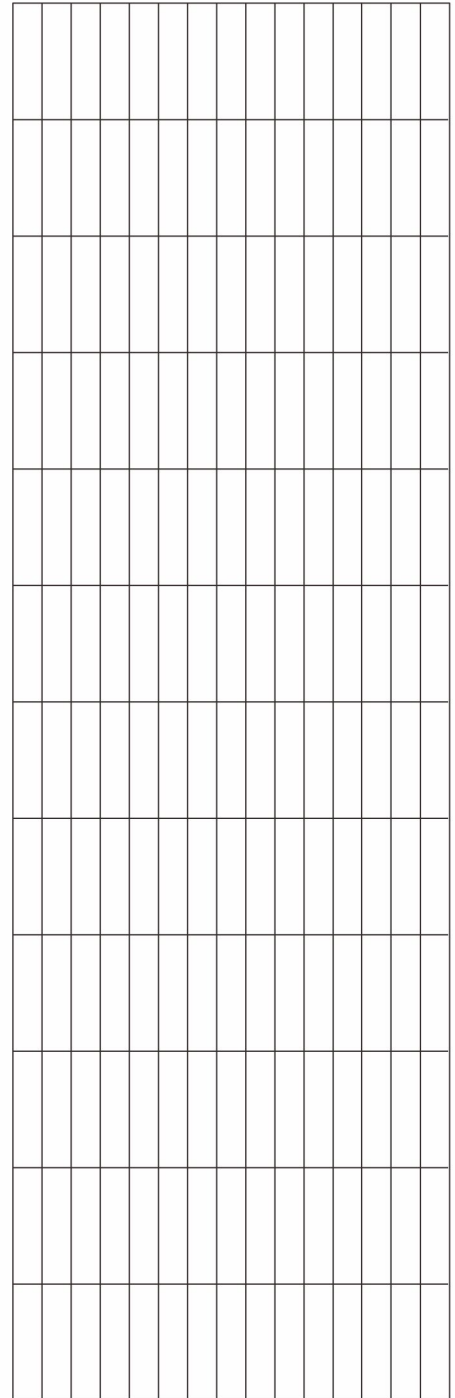
White grid

TB 24253



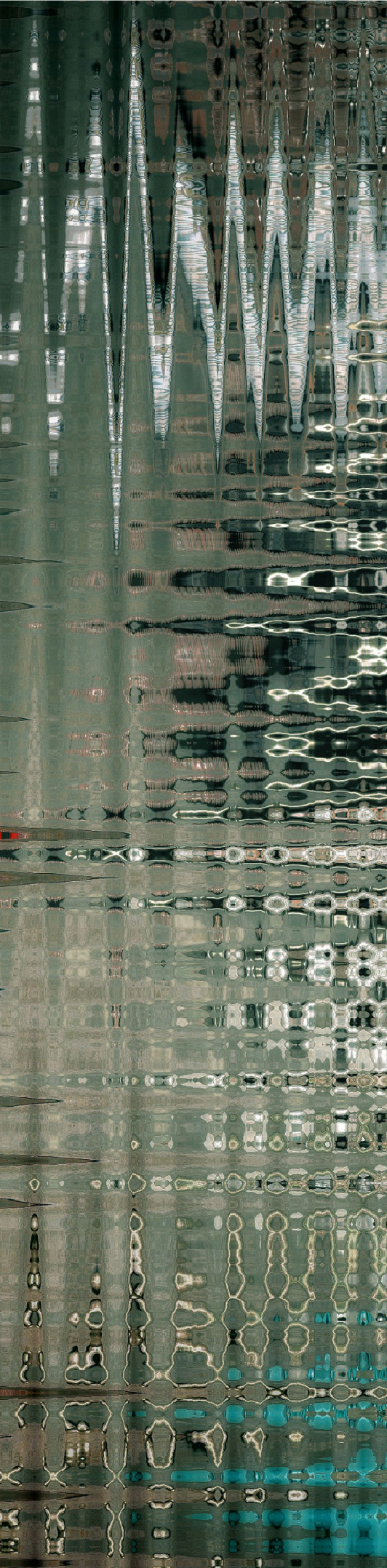
Bernini

Artistry in Depth. Beyond the Surface



Blue gradient grid

TB 24254



RICH AND CHANGEABLE PICTURE

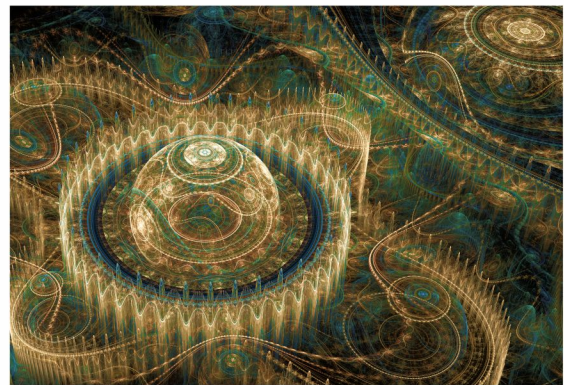
MONTAGE SERIES

SCENES COME AND GO THE TENSION RISES
AND FALLS LINES ARE LIKE CHARACTERS
BURST OUT WITH ENDLESS EXPRESSIVENESS

CUSTOM SIZES. CUSTOM LOCKING.
TOTAL FLEXIBILITY.



MONTAGE SERIES CUSTOMIZE PROCESS



CUSTOMIZE ACCORDING TO CUSTOMER'S DEMAND

Customer demand

Demand for design&Size requirement

Artwork

Designers create artwork according to requirement

Design confirmation

Customer feedback on artwork

Production artwork

Create production artwork

Sample confirmation

Confirmation of production artwork and sample swatch

Order confirmation

Confirmation of Montage series production



MONTAGE SERIES CUSTOMIZE PROCESS



CUSTOMIZE ACCORDING TO THE CUSTOMER'S DESIGN

Design image from customer

Size requirement

Artwork

Create artwork according to the customer's image and size

Sample confirmation

Confirmation of production artwork and sample swatch

Order confirmation

Confirmation of Montage series production

REQUIREMENT OF CUSTOMER IMAGE

01

The image can be AI, EPS, PSD, JPG, TIF, PDF format in high definition. The file size shall be consistent with the actual size of the panel. 120PSI is at least.

02

The production artwork is in TIF format and at least 120PSI. Customer should confirm the design typeset, size, cut, and definition in 1:1.

03

The customer should already have the copyright of image. We do not undertake any copyright issues. Designs from our company, copyright belong to our company.

04

If the customer needs to revise the design, our designers will finish according to the corresponding workload. Normally in two to three working days, actual time will be referred to the difficulty.

TECHNICAL DATA

| CLASSIFICATION | | | |
|--|-----------------|---------------------|----------|
| Reaction to Fire | EN 13 501-1 | class | B-s2,d0 |
| Thermal Resistance(TR) | EN 12667 | [m2K/W] | 0,010 |
| Dimensional Stability | EN ISO 23999 | [%] | ≤0,05 |
| Residual Indentation (RI) | EN ISO 24343 | [mm] | 0,01 |
| Formaldehyde Content | EN 12149 | - | PASSED |
| Heavy Metals Content | EN 12149 | - | PASSED |
| Vinyl Chloride Monomer Content | EN 12149 | - | PASSED |
| Sound Absorption | EN ISO 354 | - | NPD |
| PERFORMANCE | | | |
| Residual Indentation (RI) | EN ISO 24343 | [mm] | 0,01 |
| Scratch Resistance | EN ISO 1518 | [N] | 24 |
| Stain and chemical resistance | EN ISO 26987 | [-] | Index 0 |
| Abrasion Resistance | EN ISO 13329 | [cycles] | 500 |
| ENVIRONMENT | 100% recyclable | | |
| PANELS | | | |
| Total Thickness | EN ISO 24346 | [mm] | 3.7 |
| Wearlayer Thickness | | [mm] | 0.1 |
| Unit package: Carton | 2 panels | 3.12 m ² | |
| Weight | EN ISO 23997 | [g/m ²] | 7700 |
| Dimensions | EN ISO 24341 | [mm] | 600x2600 |
| TILES | | | |
| Total Thickness | EN ISO 24346 | [mm] | 3.7 |
| Wearlayer Thickness | | [mm] | 0.1 |
| Unit package: Carton | 4 panels | 2.88m ² | |
| Weight | EN ISO 23997 | [g/m ²] | 7700 |
| Dimensions | EN ISO 24341 | [mm] | 600x1200 |
| CUSTOMIZABLE SIZE | | | |
| 400mmx800mm / 475mmx900mm(A length ranging from 900mm to 2600mm) | | | |
| 600mmx1200mm(A length ranging from 1200mm to 2600mm) | | | |
| 900mmx2400mm(A length ranging from 2400mm to 2600mm) | | | |
| 1200mmx2400mm(A length ranging from 2400mm to 2600mm) | | | |